



# Non-intrusive Flow and Energy Metering With Wireless Solution



- **Located in Greater Boston Area. Wide connections to universities and high-tech companies**
- **Leader in design, development and production of flowmeters, water meters, BTU meters, AMR/AMI and wireless telemetry systems**

**...A Global Leader in Flow & Energy Management Solutions...**



# ISO9001 Quality

- Spire Metering has complete ISO9001 certification
- All Spire CMs (Contract Manufacturers) have complete ISO9001 certification

**Commitment to Total Quality!**



## **CERTIFICATE**

**TUV USA Inc.**

hereby certifies that

**Spire Metering Technology LLC**  
14B Craig Road  
Acton, MA 01720

has established and applies a quality system for the

**Design, manufacture and sales of flow measurement technologies and instrumentation**

Proof has been furnished that the requirements according to

**ISO 9001:2008**  
are fulfilled.

Further clarifications regarding the scope of this certificate and the applicability of ISO 9001:2008 requirements may be obtained by consulting the organization.

**Certificate Registration No.**  
**10-1074**

Effective: January 1, 2012

Expires: June 1, 2013



*Jodi Espinal*  
Quality Systems Division  
Sales, TUV USA Inc.

Date of Issue: August 30, 2011

218 Main Street, Suite 2, Salem, NH 03079



**We are proud to be the selected supplier  
for:**

**SIEMENS**

**Honeywell**



Johnson  
Controls



Schneider  
Electric



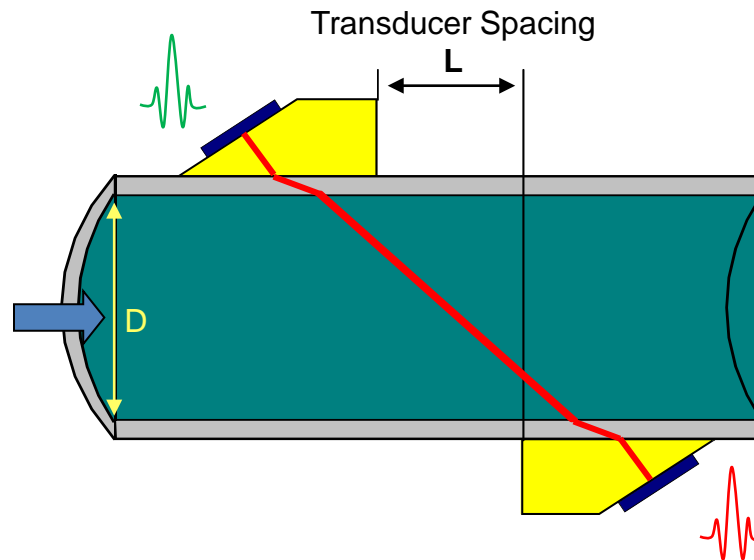
LARSEN & TOUBRO  
It's all about Engineering

and more ...



# Ultrasonic Flow Measurement

## Transit-time Technology

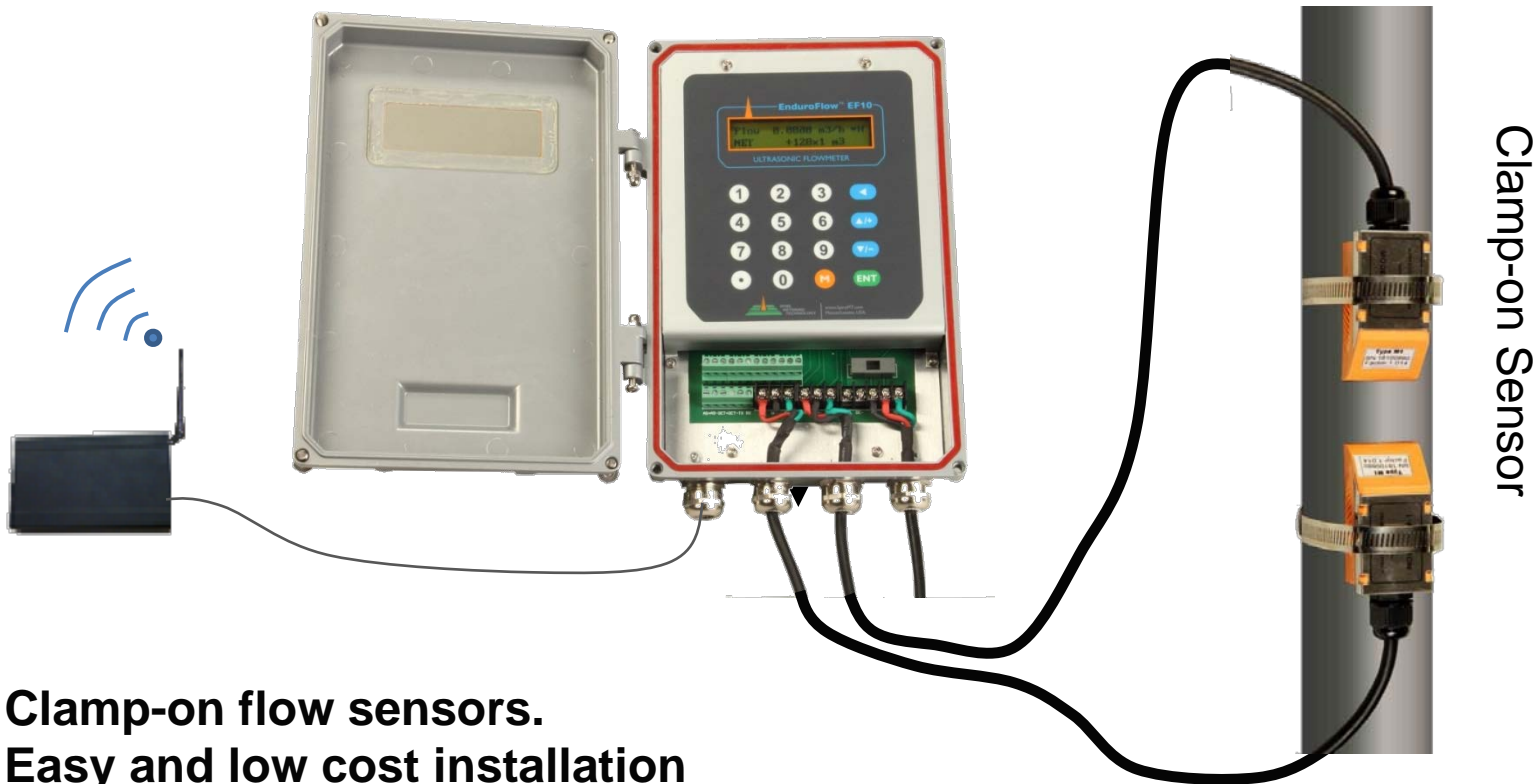


Each transducer sends a sound pulse towards another.

Sound pulse traveling along the flow is faster than the one traveling against the flow.

The transit-time difference of the two pulses are proportional to the flow rate.

# Wireless Clamp-on Ultrasonic Flowmeter



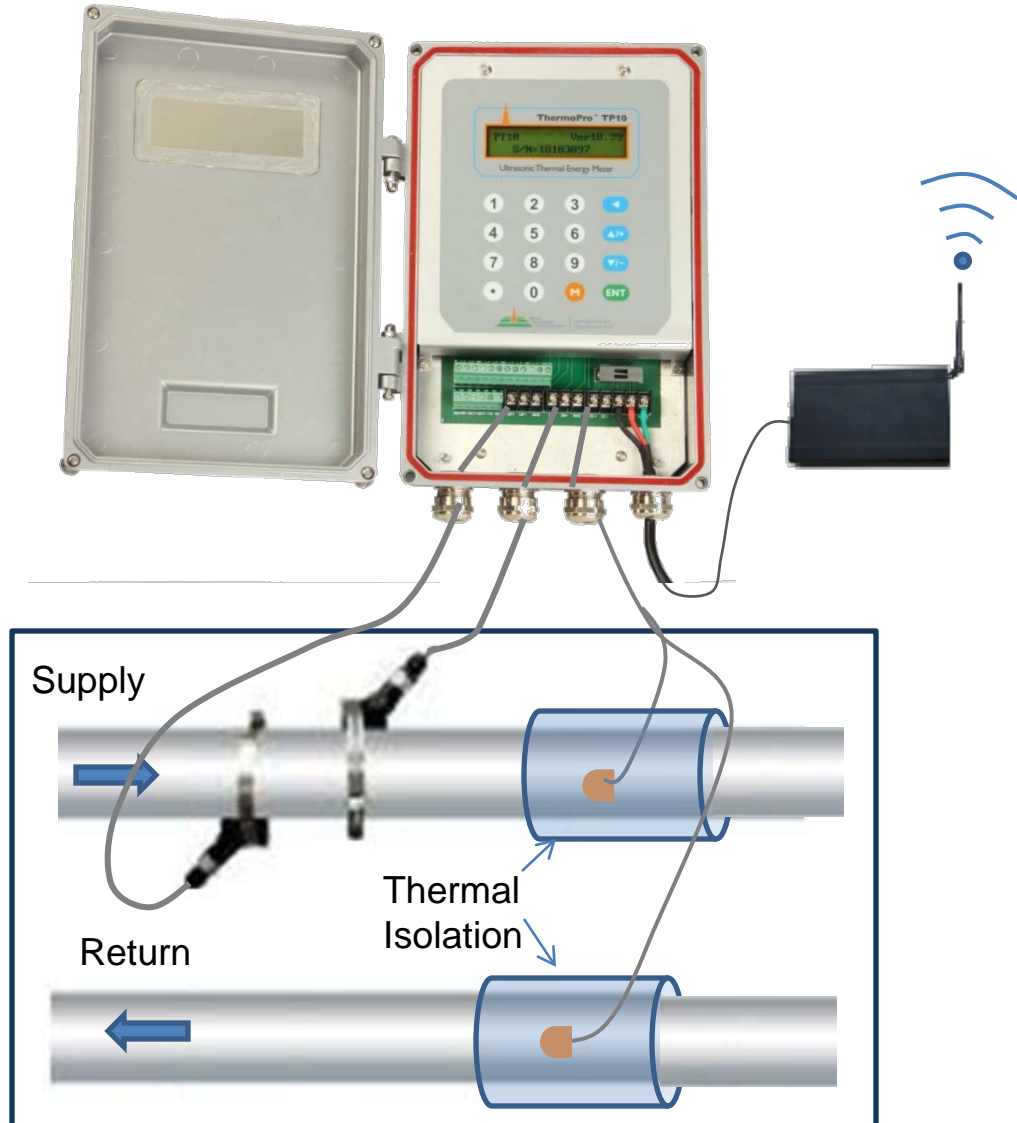
- **Clamp-on flow sensors.**  
**Easy and low cost installation**
- **Maintenance-free**
- **High performance. 1% accuracy**
- **Wireless, either RF 433MHz or GSM/GPRS cellular**



ThermoPro™ Series – TP10

# Wireless Clamp-on Ultrasonic BTU Meter

- **Clamp-on flow and temperature sensors. Easy and low cost installation**
- **Maintenance-free**
- **Measure thermal energy accurately**
- **Wireless,**
  - **RF 433MHz**
  - **GSM/GPRS cellular**





# NIST Certified 1% Accuracy For Clamp-on Flowmeter

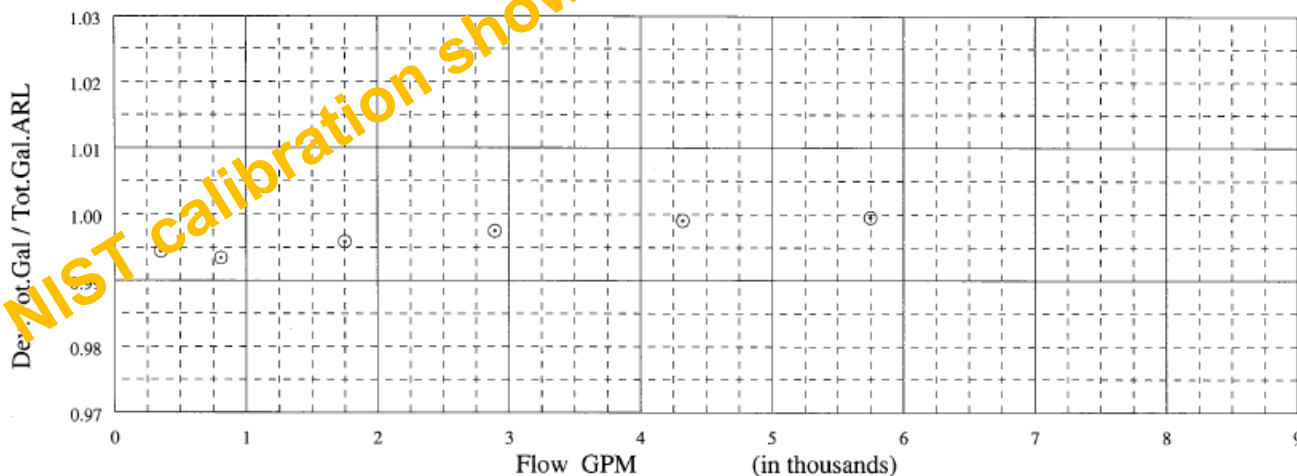
## SHENITECH, LLC

Purchase Order Number: 123  
SHENITECH STUF-300F ON 12" CS SCH 40 PIPE #12-141  
UNIT S/N 12700113

CALIBRATION  
DATE: September 4, 2008

AS LEFT, CALIBRATION FACTOR = 1.015

Run #	Line Temp Deg F	Net Weight lb.	Run Duration secs.	Flow GPM	Total Gallons ARL	Reading Device Gallons	Dev.Tot.Gal divided by Tot.Gal.ARL
9	70	44363	55.682	5745.	5332.	5330.	0.9995
10	70	12624	258.341	352.4	5317.	1509.	0.9944
11	70	24587	219.720	807.0	2955.	2936.	0.9935
12	69	45380	187.152	1748.	5454.	5432.	0.9959
13	69	44347	110.650	2890.	5330.	5317.	0.9975
14	69	44971	75.085	4919.	5405.	5400.	0.9990



The data reported on herein was obtained by measuring equipment the calibration of which is traceable to NIST, following the installation and test procedures referenced in this report, resulting in a flow measurement uncertainty of +/- 0.25% or less.

CALIBRATED BY: THL  
Witnessed by a company representative

CERTIFIED BY:



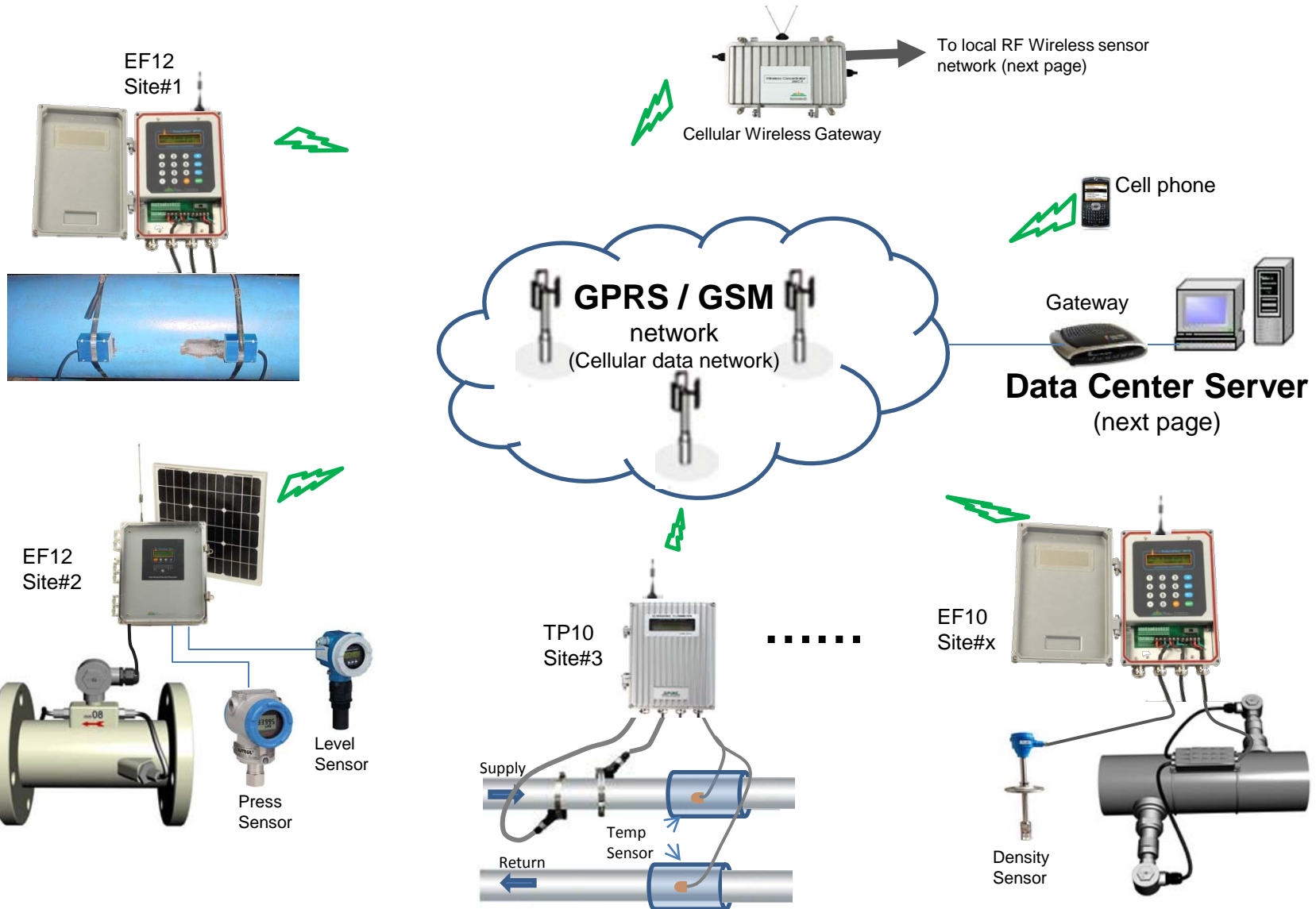


# Spire Metering Product Advantages

- Cost effective
- Simple to configure and easy to use
- Industry leading technologies, 50ps time resolution
- Increased robustness with patented signal processing technologies
- Transducer pairing for optimal performance
- Wet-calibration using NIST standard
- Strong technical support
- Industry's most comprehensive quality and extended 2 year satisfaction guarantee
- Proven record from more than 3,000 customers worldwide

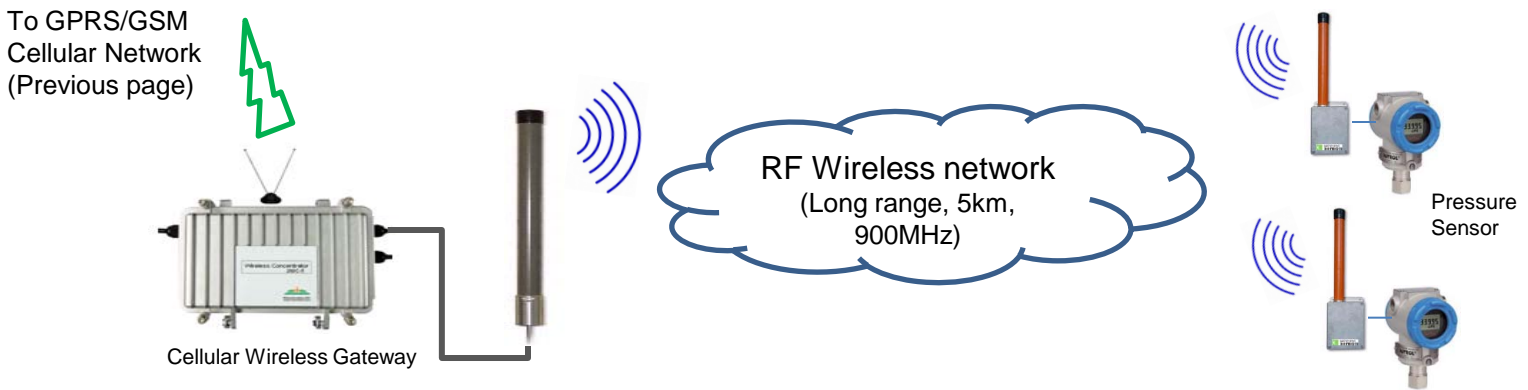
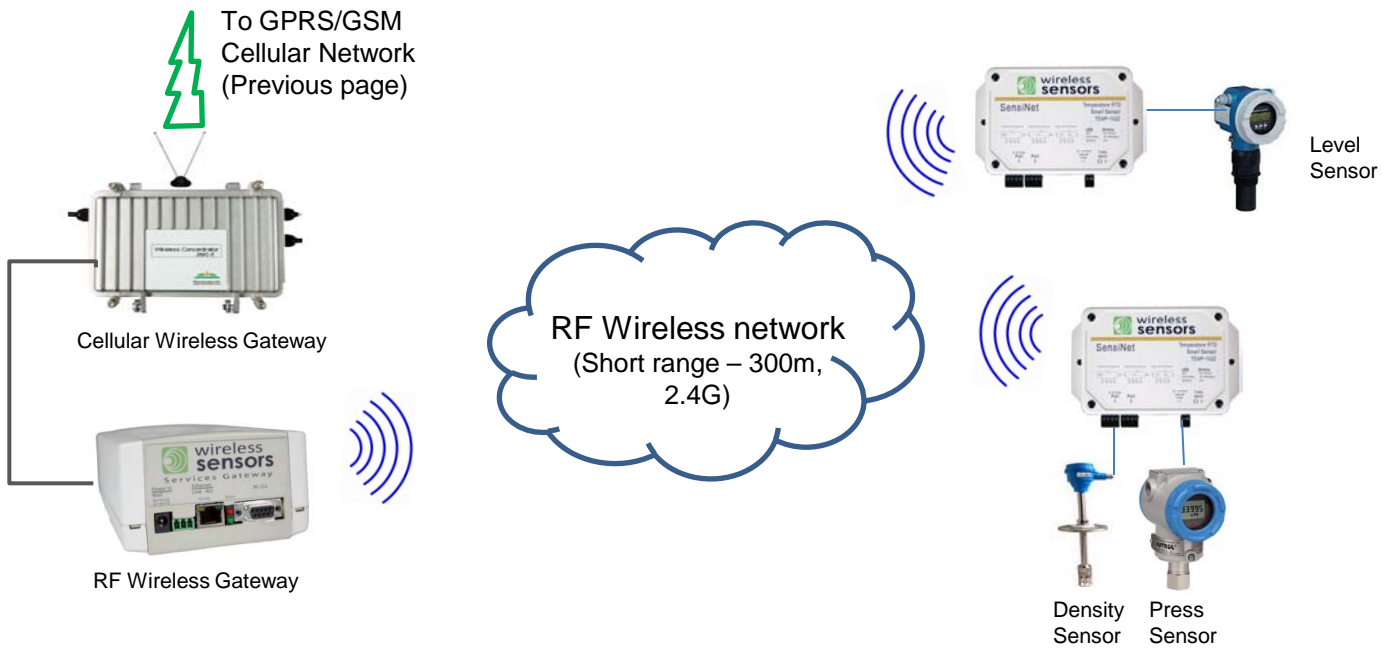


# uGalaxy™ Wireless Telemetry System





# Local RF Wireless Sensor Network





# HOW IT WORKS

- The telemetry system could consist a number of Spire Metering's wireless flow and BTU meters, such as EF10, TP10, 280W, 280T, and more.
- With EF10 and TP10 ultrasonic meters, you can measure the flow and BTU energy from outside of a pipe with high accuracy. EF10 and TP10 also provide 2 analog inputs so to manage additional transmitters such as pressure sensor and level sensor.
- The telemetry system can also include a number of local RF wireless sensor networks.
- Each local sensor network has a RF Wireless Gateway. The RF Wireless Gateway connects to a GPRS/GSM Cellular Wireless Gateway which brings all the sensors in the local sensor network to the large GPRS/GSM network.



## HOW IT WORKS (continue)

- Each Flowmeter, BTU meter or Cellular wireless gateway has a GPRS/GSM modem already built in.  
The GPRS/GSM modem should have a SIM card provided by local cellular phone company with valid GPRS or GSM data service
- The data center (next 3 slides) polls data from each flow meter, BTU meter or other wireless sensor at a pre-scheduled interval. The data center receives and validates the data and saves the data in its database.
- The data center then publishes the data on website or through a client software on local computer
- The data center should have a static IP address if GPRS data service is used.



# uGalaxy™ Software Platform



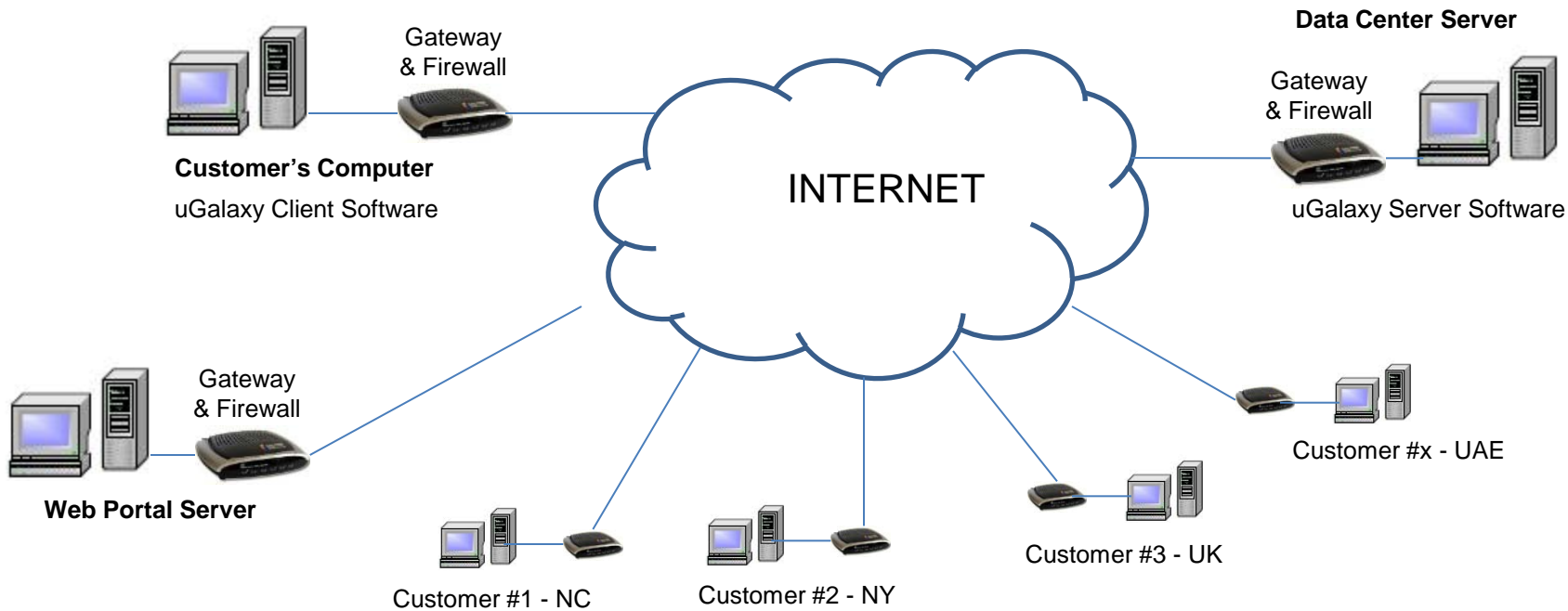
## Complete telemetry management at your finger tips

- We can provide turnkey solution for data service. Customers can get data from website directly. No need for data center software
- We can also provide data center software package so customers have flexibility and more control on their data



# Data Presentation

(for Turnkey Data Service only)



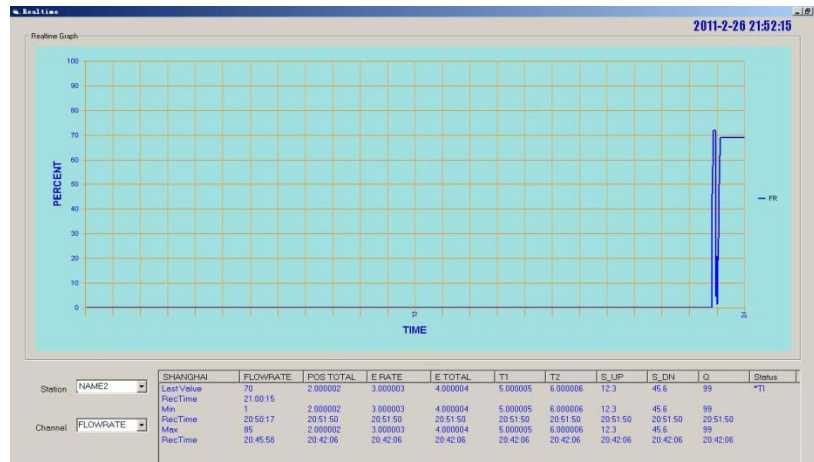
**Access Sensor Data Anywhere, Anytime!**  
**Turkey Solution for Data Service!**



## uGalaxy User Interface Software

uGalaxy Client software runs on the customer's computer. It communicates with the data center server through the Internet.

uGalaxy Client software fetches data from the data center server. It displays the data through the graphic interface, saves data to hard drive, prints the data, etc.



## Web Portal

The data collected by the data center server will be presented on the web site.

Each registered customer can log into his/her own account using web browser. He/she can check the sensor data anytime and anywhere.

A web portal login form with a light blue background. The text 'Enter Your Login Key' is displayed in a dark font. Below the text is a white rectangular input field with a thin black border.

# Success Stories



**Installed in over 30 countries for more than 3,000 customers, in wide-ranging applications.**

**The following slides list a few of them.**





# ConocoPhillips Telemetry System

- Flow, temp & BTU energy monitoring for several large facilities
- More than 30 units of clamp-on wireless BTU meters
- Data sent to Spire server through GPRS wireless network
- Client views real-time data from website



**Texas, USA**



# Chiller System Applications

- Large pharmaceutical facility
- 30 units of TP10 thermal energy systems installed
- Monitors and manages the efficiency of the heating and cooling production and distribution network



**Non-intrusive Thermal Energy Measurement System  
Honeywell-Pfizer, PA, USA**



# Fuel Efficiency Monitoring System

- Large furnace supplies heating for a landmark building
- Installs a high performance Spire Flowmeter system
- Measures accurately the inlet and outlet fuel flow rates
- Monitors the fuel efficiency



7<sup>th</sup> World Trade Center, New York, USA



# Makkah Clock Tower Utility Management System

- \$2mil project
- 5000 tenants
- 5000 water meters
- 5000 BTU meters
- 5000 energy meters
- 150 concentrators
- High performance data center system
- AMR software platform
- Billing software platform



**Makkah Tower – Bin Laden Group, KSA**



# Commercial Applications

Ultrasonic BTU meters have been widely installed in commercial buildings such as shopping malls.



**Modern Shopping Mall -Siemens, India**



# References



NASA – USA



Monroe South Bend Canal Association – Utah, USA



7th World Trade Center  
New York, USA



BHP Billiton - Australia



BT Applied  
Technology –  
Saudi Arabia



India Institute of Technology  
– Bombay, India



AI Gore's Green house  
Tennessee, USA



Army National Guard –  
New Hampshire, USA



GE Global Research

United States - India - China - Germany



Diplomat Engineering LLC - UAE



# THANK YOU!



Spire Metering Technology LLC.  
Massachusetts, USA  
[www.SpireMT.com](http://www.SpireMT.com)